

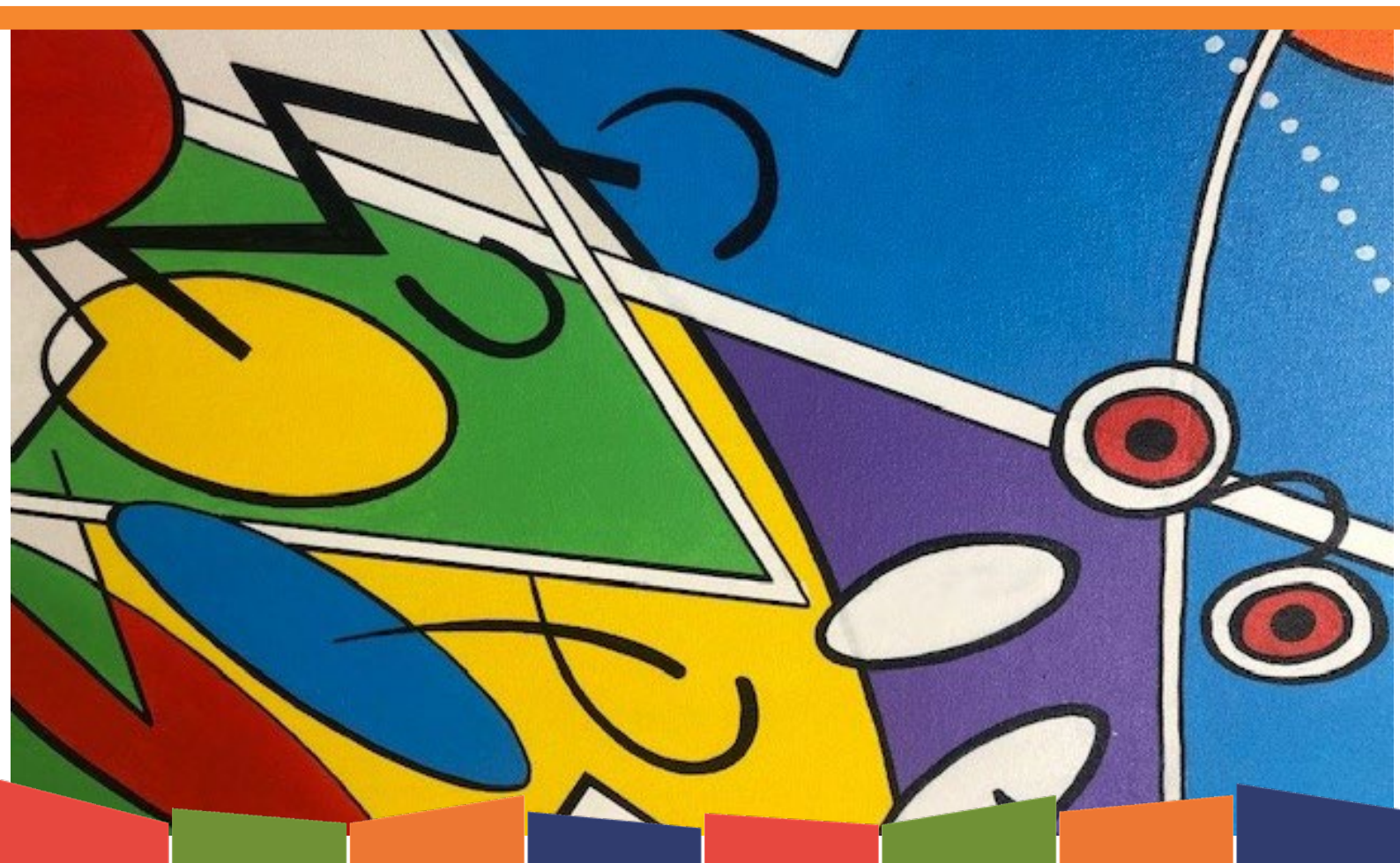


SHIRE OF MURWEH

MORVEN - CHARLEVILLE - AUGATHELLA

2022-2023

RADF Guidelines



Regional Arts Development Fund (RADF)

Purpose

The Regional Arts Development Fund (RADF) promotes the role and value of arts, culture and heritage as key drivers of diverse and inclusive communities and strong regions. RADF is a flexible fund that supports local councils to invest in arts and cultural priorities, as determined by local communities, across Queensland.

The Queensland Government recognises local councils as key partners and co-investors in Queensland's arts and culture. Delivered as a partnership between the Queensland Government through Arts Queensland, and eligible local councils across the state, RADF aims to:

- provide public value for Queensland communities
- build local cultural capacity, cultural innovation and community pride
- deliver the Queensland Government's objectives for the community.

Objectives

RADF objectives are to support arts and cultural activities that:

- provide public value for Queensland communities
- build local cultural capacity, cultural innovation and community pride
- deliver the Queensland Government's objectives for the community.

Assessment criteria

Quality

- Produces or contributes to high quality arts and cultural initiatives for local communities.
- Proven capacity to effectively support and deliver arts and cultural services.

Reach

- Provides access to and engagement in arts and culture for diverse communities, practitioners, participants and audiences.
- Evidence of local demand for proposed program/s.
- Demonstrates community and stakeholder involvement in RADF priority setting, decision making and evaluation.

Impact

- Demonstrates cultural, artistic, social or economic returns on investment.
- Supports one or more Queensland Government objectives for the community including encouraging safe and inclusive communities, building regions, supporting disadvantaged Queenslanders, stimulating economic growth and innovation, increasing workforce participation and conserving heritage.

Viability

- Evidence of good planning for strong governance and management of RADF at a local level.
- Evidence of partnership capacity with partners including business and government.

Local Priorities

- Provide opportunities for the involvement of local artists.
- Provide support for expanding the capacity of local arts and cultural volunteers.
- Provide for the inclusion of creative visual landscapes or artscares.
- Provide widespread, equitable access and participation in arts & cultural activity to enhance quality of life for our residents.
- Engagement of youth, indigenous and minority groups, access to outside practitioners and opportunities, enrichment of lives through creative and cultural experiences.
- That projects for residents of the Murweh Shire are generated by the community in response to their needs as groups or individuals.
- To include as much of the shire and as many artforms as possible, creating a vibrant community.
- Support for touring performances in particular and support for the collaborative Western Regional Touring circuit.

HOW MUCH CAN I APPLY FOR?

RADF will not support 100% of any project. If the applicant is registered for GST, Council will pay the grant, plus GST (10%). [Please remember to identify in-kind support in your application](#)

The following can apply for a RADF grant:

Individual professional artists, emerging professional artists, artswokers, cultural workers or project coordinators who:

- are based in the Council area, or if based outside the Council area are able to demonstrate how the project will directly benefit arts and culture in the Council area.
- are permanent residents or Australian citizens.
- Must complete the 'Eligibility Checklist for Professional / Emerging Professional Artists'.
- Community groups and organisations
- Incorporated arts and cultural organisations based in the Council area, or those based outside the Council area that are able to demonstrate how the project will directly benefit arts and culture in the Council area.
- Unincorporated organisations, auspiced by an incorporated body, that are based in the Council area, or those based outside the Council area that are able to demonstrate how the project will directly benefit arts and culture in the Council area.

RADF WILL NOT SUPPORT;

- Retrospective applications (projects started or completed before notification of successful funding has been received).
- Requests for 100% of project costs.
- Applicants who have failed to acquit previous RADF grants. Additionally, the following will not be considered for funding:
 - Framing or freight — only a small proportion of these costs can be covered as part of presentation costs for significant exhibitions. As a guide only, 10% of the total framing and freight costs would be considered a small proportion.
- Catering costs, openings, launches and parties are not eligible for RADF grants, even if they are part of an exhibition or community project.

- Competitions — they are prolific and could monopolise funds. The competitive environment does not necessarily nurture emerging artists, as there is generally only one winner.
- Publishing costs — requests for grants to publish books should be directed to organisations that provide print-on-demand services. A small proportion of printing costs are eligible as part of the presentation costs for significant projects. As a guide only, 10% of the total publishing costs would be considered a small proportion.
- Purchase of capital items, e.g. equipment, buildings or vehicles. RADF gives artists and organisations opportunities for employment, professional development and a chance to practise their art. Buying capital items does not necessarily lead to these outcomes. **EXCEPTION:** Capital items can be funded only when they are included as part of a project application and when the RADF Committee considers the purchase integral to that project and where the item will remain available for community use.
- Project management or administrative assistance costs.
- Recurrent funding for arts organisations — operational expenses are ineligible under RADF including wages for permanent staff and office expenses. **However, local arts and cultural organisations that have regular community activities may apply for funding annually for different projects which have a project management component.**

HOW WILL YOUR APPLICATION BE ASSESSED?

All applications will be assessed by the local RADF committee against the following criteria:

- Murweh Shire Priorities
- RADF Assessment Criteria
- Categories of Funding

What are the categories of funding?

Funding is available for individuals, groups or Councils under the following categories;

Individual Artistic Development

Individual artists and artworkers living in Murweh Shire to attend professional development seminars or activities; master classes; mentorships with recognised arts and cultural peers; and placements with recognised arts and cultural organisations.

- RADF grants will support intrastate and interstate activities only. (Arts Queensland's Career Development grants support international activities, including overseas travel.)

Building Local Skills

for community groups to engage a professional artist or artworker to work with them on developing their arts practice or to run arts development workshops or community projects.

- RADF grants will support travel, accommodation and fees associated with employing professional artists or artworkers to work on community projects or workshops in the local community.
- Assistance is available for up to 65 per cent of the total costs of the project or workshop.
- This category is also open to Councils that wish to assume a co-ordination role for projects.

Vibrant Towns

- Murweh Shire is home to the communities of Charleville, Augathella, Morven and Cooladdi, each of which has a distinct personality and history. This priority is about creating a sense place in our towns which respects and highlights their heritage and character. Projects that bring our Shire alive through events, activities and celebration are encouraged.

Cultural tourism

For projects and activities that focus on communities' locally distinct arts, culture and heritage both for members of that community and for visitors.

RADF grants can support initiatives and activities that focus on:

- product development by professional artists, either as individuals or in partnership with individual community members or community groups
- marketing of professional artistic product.

Heritage

To preserve and provide access to locally held collections of significance, and collect and tell local stories from the past and the present that can demonstrate state and/or local significance.

Concept development

To develop arts and cultural research ideas and project proposals to the implementation stage and identify funding sources outside of RADF for further funding or project progression.

RADF grants will support individuals and groups who wish to engage in professional research and the development of ideas and project proposals to the implementation stage. No specific artform product is required; however, the project should demonstrate how it will contribute to future arts and cultural development. Potential funding sources for the implementation of the project do not need to be identified prior to making the application.

This category is also open to Councils.

If you have any further questions please call Murweh Shire
RADF Liaison on 46568355 or email
mail@murweh.qld.gov.au

RADF Acknowledgement

Arts Queensland funding demonstrates a commitment by the Queensland Government on behalf of the public and reflects a partnership between the state government and the funding recipient.

By acknowledging the financial assistance provided by the Queensland Government, you are informing the community about how public funding is being spent.

Funding recipients must acknowledge Arts Queensland's funding in all publicity relating to funded activities and operations.

Wording to be used;

"The Regional Arts Development Fund is a partnership between the Queensland Government and Murweh Shire Council to support local arts and culture in regional Queensland."

Where?

Acknowledgement must be included in the following project materials.

Item	Written	Logo
Media release	✓	
Speech	✓	
Annual Report	✓	✓
Promotional video		✓
Advertisement		✓
Newsletter	✓	✓
Printed promotional material	✓	✓
Signage	✓	✓
Website	✓	✓
Invitation		✓
Promotional material sent via email	✓	✓
Social media	✓	

Logos to be used:

